

## PSC PTLST-20-1M/2M

A Portable Telescopic, Laser Sight Thermometer for demanding applications



### FEATURES

- Temperature ranges from 725 - 3252°F (385 - 1800°C)
- High optical resolution up to 300:1
- Precise aiming with dual laser and scope sighting
- Adjustable emissivity from 0.100 - 1.000
- Short wavelength spectral responses - minimizes temperature errors due to changes in product emissivity
- MAX/MIN function and audible and visible HIGH-/LOW-alarm
- USB interface, PSC Connect Software
- Data logger for 2000 measured values

General specifications	
Ambient temperature	32 - 122°F (0 - 50°C)
Storage Temperature	- 4 - 140°F (-20 - 60°C)
Relative Humidity	10 - 95%, non-condensing
Size	10.3 x 8 x 2.36 in/264 x 203.5 x 60 mm
Weight	2.2 lbs/1000 g
Electrical specifications	
Outputs/digital	USB Interface
Power	Ni-MH rechargeable battery
BatteryLifeTime	5 hr laser and backlight or 25 hr w/o laser and backlight
Charge	Battery charger
Adapter	110VAC to 240VAC (50/60Hz)

Measurement specifications	
Temperature ranges	1202 - 3272°F/650 - 1800°C (1M) 725 - 2912°F/385 - 1600°C (2M)
Optical resolution-1M/2M	300:1
System accuracy-1M/2M	±0.3% of reading ±1°C
Repeatability-1M/2M	±0.1% of reading ±1°C
Response time-1M/2M	100 ms
Emissivity (adjustable)	0.100 - 1.000
Sighting-1M/2M	Dual lasers
Sighting scope	All models
Signal processing	MAX/MIN, Scan/Hold function
Alarm functions	Audible and visible HIGH/LOW
Data storage	2000 values
LCD-Backlight	Three color alarm notification Green - normal operation Blue - low set point Red - high set point

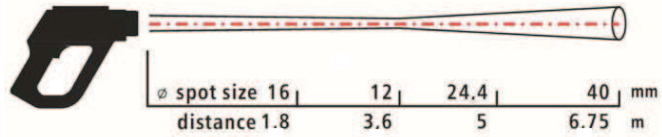
# PSC PTLST-20-1M/2M

Technical data	PTLST-20-1M	PTLST-20-2M
Temperature range	650 - 1800°C	385 - 1600°C
System accuracy	±0.3% of reading ±1°C	
Repeatability	±0.1% of reading ±1°C	
FOV (Field of View)	300:1	
Response time (95%)	100 ms	
Spectral range	1.0 µm	1.6 µm
Emissivity	adjustable: 0.100 to 1.000	
Alarm	•	
Laser	dual laser	
Focus	0.47 in @ 11.8 ft/12 mm @ 3.6 m	
Sighting Scope	•	
Outputs / digital	USB interface	
MAX/MIN/HOLD	•	
Data Logger	2000 values	
Software	PSC Connect Software	
Battery Charger	•	
Ni-MH battery	•	
Carrying case	•	
Tripod mount	1/4 inch - 20 UNC	

- Standard accessories

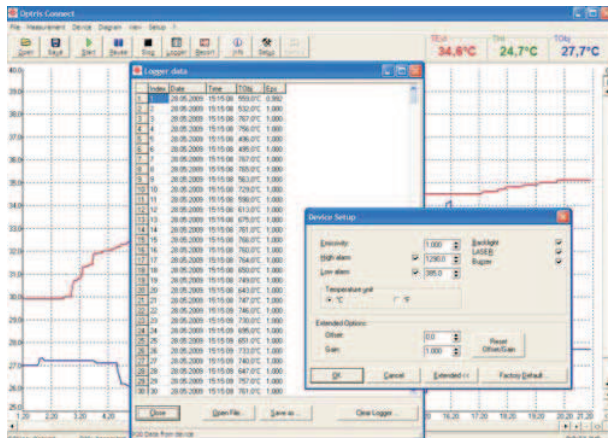
## Optical specifications

PTLST-20-1M/2M



D:S = 300:1

## PSC Connect Report Software



- Setup of parameters
- Download of logger data
- Display and record of temperature trends
- Image based report function